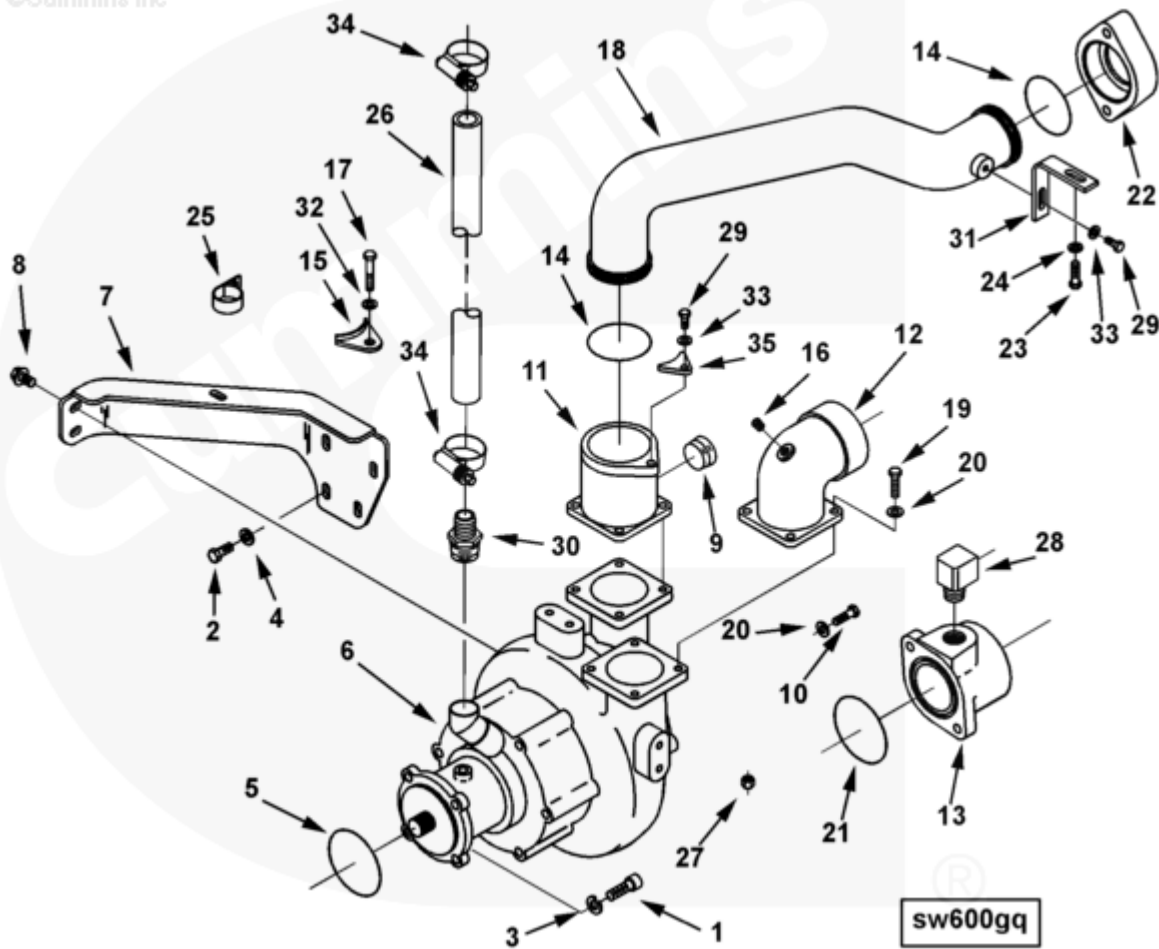




Parts Catalog - Option Detail

Electronic Parts Catalog - Option Detail				
Option	Group	Graphic	Film Card	Date
SW6008-03	08.11	sw600gq	K38	01-NOV-99
Engines	GTA38, K38, KTA38GC CM558, QSK38 CM2150 K106, QSK38 CM2150 MCRS, QSK38 CM850 MCRS			

©Cummins Inc



[SMALL](#) | [MEDIUM](#) | [LARGE](#)

Cart	Ref No	Part Number	Part Description	Required	Remarks
<input type="button" value="View My Cart"/>					
		SW6008-03	Sea Water Pump		Pump, sea water...(More)
					300 usgpm bronze impeller,
					self priming sea water pump
					for use with integral heat

					exchanger. Clockwise
					rotation, when viewed from
					the front of the engine.
					Pump is orificed to deliver
					250 usgpm at 1900 engine RPM,
					180 usgpm if used with up to
					70 usgpm gear cooler flow.
					Option is for use with
					flanged type flexible
					connections.
<input type="checkbox"/>	1	S 184 A	Socket Head Cap Screw	4	1/2 - 13 X 1 1/4 in.
<input type="checkbox"/>	2	103023	Hexagon Head Cap Screw	4	7/16 - 14 X 1 in.
<input type="checkbox"/>	3	111445	Lock Washer	4	
<input type="checkbox"/>	4	3000082	Plain Washer	4	15/32 in.
<input type="checkbox"/>	5	3033248	O-Ring Seal	1	
<input type="checkbox"/>	6	3393018	Sea Water Pump	1	
<input type="checkbox"/>	7	3632855	Sea Water Pump Bracket	1	
<input type="checkbox"/>	8	3913372	Hexagon Flange Head Cap Screw	2	M12 X 1.75 X 20.
<input type="checkbox"/>	9	S 907 A	Pipe Plug	1	1 1/4 NPT
<input type="checkbox"/>	10	3393227	Hexagon Head Cap Screw	2	
<input type="checkbox"/>	11	3393232	Water Outlet Connection	1	
<input type="checkbox"/>	12	3393407	Water Inlet Connection	1	
<input type="checkbox"/>	13	3393409	Water Outlet Connection	1	
<input type="checkbox"/>	14	3393521	O-Ring Seal	2	
<input type="checkbox"/>	15	3393522	Tube Clamp	2	
<input type="checkbox"/>	16	3628605	Pipe Plug	1	1/4 - 18.
<input type="checkbox"/>	17	3632198	Hexagon Head Cap Screw	2	
<input type="checkbox"/>	18	3633846	Water Transfer Tube	1	
<input type="checkbox"/>	19	3633869	Hexagon Head Cap Screw	8	
<input type="checkbox"/>	20	3897748	Plain Washer	12	

<input type="checkbox"/>	21	3897787	O-Ring Seal	2	
<input type="checkbox"/>	22	4058150	Water Transfer Connection	1	
<input type="checkbox"/>	23	S 103 D	Hexagon Head Cap Screw	1	3/8 - 16 x 1 1/4 in.
<input type="checkbox"/>	24	S 604	Lock Washer	1	3/8 in.
<input type="checkbox"/>	25	68189	Clip	1	
<input type="checkbox"/>	26	215946	Plain Hose	1	
<input type="checkbox"/>	27	3201128	Regular Hexagon Nut	1	3/8 - 16 UNC.
<input type="checkbox"/>	28	3250596	Plain Adapter Elbow	1	
<input type="checkbox"/>	29	3349015	Hexagon Head Cap Screw	2	
<input type="checkbox"/>	30	3393046	Plain Hose Coupling	1	
<input type="checkbox"/>	31	3393226	Water Tube Bracket	1	
<input type="checkbox"/>	32	3628902	Plain Washer	2	
<input type="checkbox"/>	33	3897359	Plain Washer	2	
<input type="checkbox"/>	34	3922844	Hose Clamp	2	
<input type="checkbox"/>	35	3393239	Tube Clamp	1	